

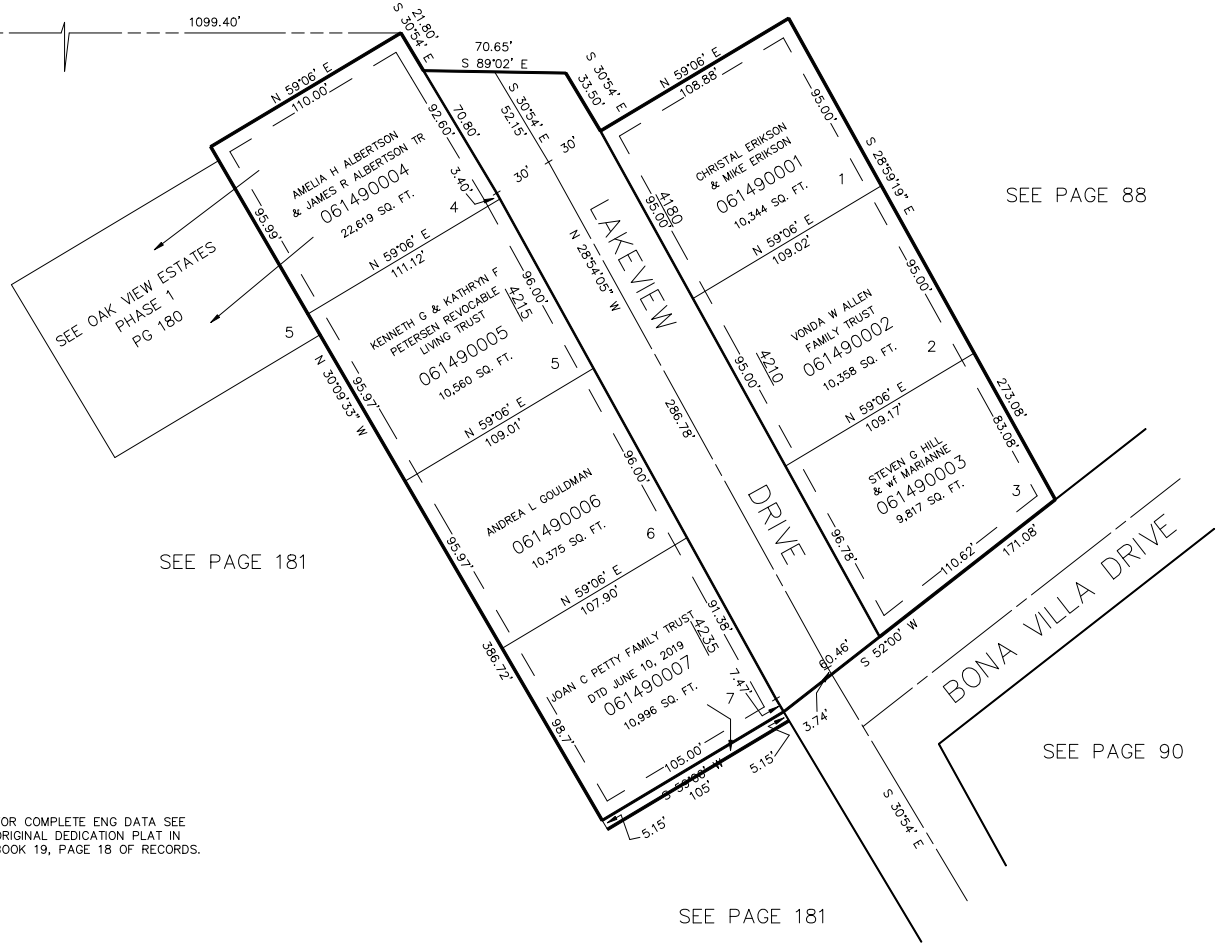
PART OF N.E. 1/4, SEC. 10, T.5N., R.1W., S.L.B. & M.
ENGLAND HILLS SUBDIVISION

IN OGDEN CITY
SCALE 1" = 50'

TAXING UNIT: 25



SEE PAGE 95



SEE PAGE 88

SEE PAGE 181

SEE PAGE 90

SEE PAGE 181

FOR COMPLETE ENG DATA SEE
ORIGINAL DEDICATION PLAT IN
BOOK 19, PAGE 18 OF RECORDS.

7' UTILITY & DRAINAGE EASEMENTS EACH
SIDE OF PROPERTY LINES AS INDICATED
BY DASHED LINES EXCEPT AS OTHERWISE
SHOWN.